



Career opportunities for persons with partial work ability (OTE)

Let's get people with partial working ability
working and keep those with full ability in work

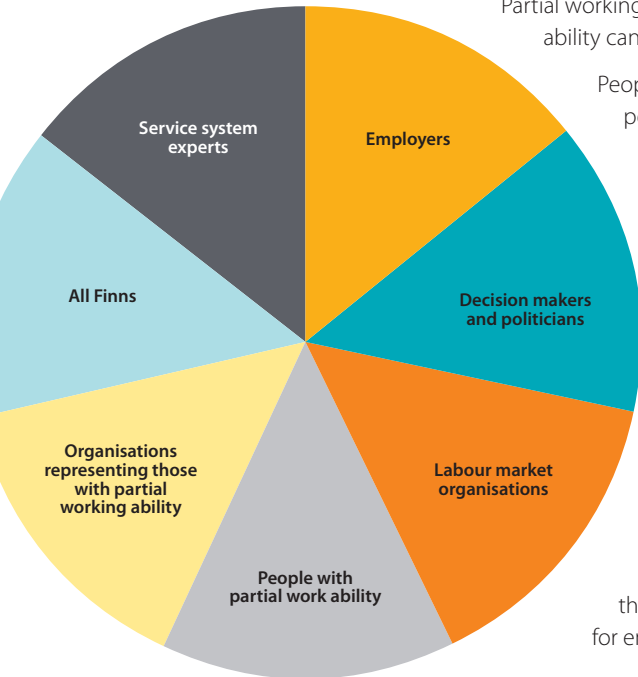
As many as

600 000

people of working age
consider that an
illness or injury affects
their work or their
possibilities to
work

**GOVERNMENT
KEY PROJECTS**

Partial working ability affects almost every Finn during their working life



Partial working ability relates to a limited ability and the demands of a specific job. Partial working ability can also be temporary.

People with partial working ability have a higher risk of unemployment than other people. Injury or long-term illness often prevents a return to work or to getting a job in the first place.

Over half of Finns of working age have some long-term illness or injury.

People with partial working ability are employed and remain in employment through collaboration between service networks and employers

The OTE key project explores ways to support those with partial working ability in their search for employment and to keep them in work.

Employing people with partial working ability and keeping them in work is valuable for the individual, the employer and for society



When a person with partial working ability continues in work or is employed on the open labour market, inclusion in society and equality increase, income levels rise and well-being improves.



Keeping a skilled labour force employed brings cost benefits to the employer. Unused resources are brought into productive use.



When someone with weakened working ability is no longer excluded from working life, there is a saving of society's resources and inequality is reduced.

The main measures of the key project are divided into eight sub-projects which will be implemented collaboratively by the Ministry of Social Affairs and Health and the Ministry of Employment and the Economy

1.
Recommendations
from the programme
for people with partial
working ability
(Osku)

2.
Training for work ability
coordinators

3.
Entrepreneurship
for people with
disabilities

4.
Models for
employment and
social inclusion

5.
Making it easier to
employ people with
partial working
ability

6.
Online service

7.
Paths for treatment,
rehabilitation and
early support

8.
Incentive traps



Let's find
solutions

The objective of the Career opportunities for persons with partial work ability (OTE) key project is that people with partial working ability will continue in work or will be employed on the open labour market.

Further information:

Päivi Mattila-Wiro, Programme Director, MSAH, paivi.mattila-wiro@stm.fi

stm.fi/hankkeet/osatyokykyisyys, #OTEhanke

Career opportunities for persons with partial work ability -online service: tietyoelamaan.fi